

Ascending Path

Proposed Design for Renaissance Park, Chattanooga, TN

"Weary travelers move across the land upon manmade structures that rise above our reach but in our view. Many peoples have traversed this site going west; some by choice, some by force, and others in fear. This crossing holds the spirits of many silent travelers."



Looking south towards the Tennessee River and Aquarium



Looking southwest, from Market St.



Looking south with view of **Passage** sculpture site framed by arch



Looking southeast, towards Market St. Bridge

Ascending Path

Proposed Design for Renaissance Park, Chattanooga, TN



Looking southwest from Trail of Tears paths (Lookout Mountain and the Bluffs District in background)



View with Market St. Bridge in background



View with Lookout Mt in background

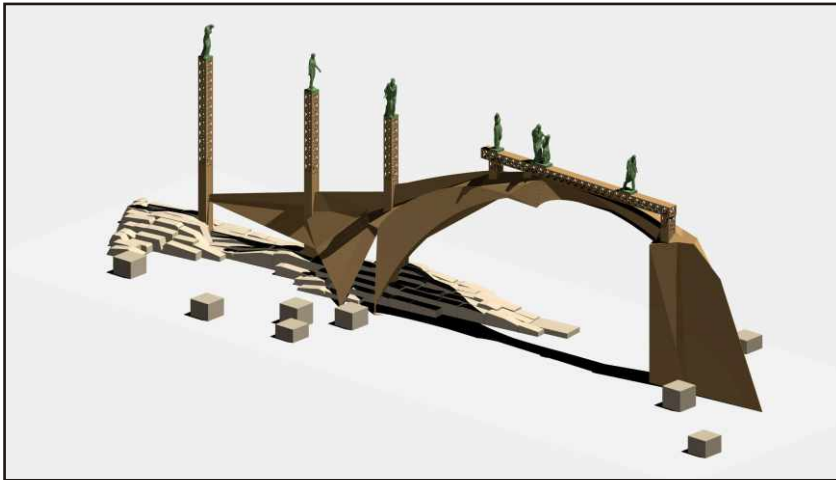
Ascending Path is both a bridge and a gateway.

It marks a place of transition, and speaks to all who have passed through it, and to all those yet to do so. This is where the Trail of Tears started. This is where African American slaves found freedom. This is a place where the forces of nature come together, the Tennessee River coursing past and Lookout Mountain rising up. This is a site of cultural and economic transitions, transforming from a place of commerce into one of industry, and now into a place of rebirth.

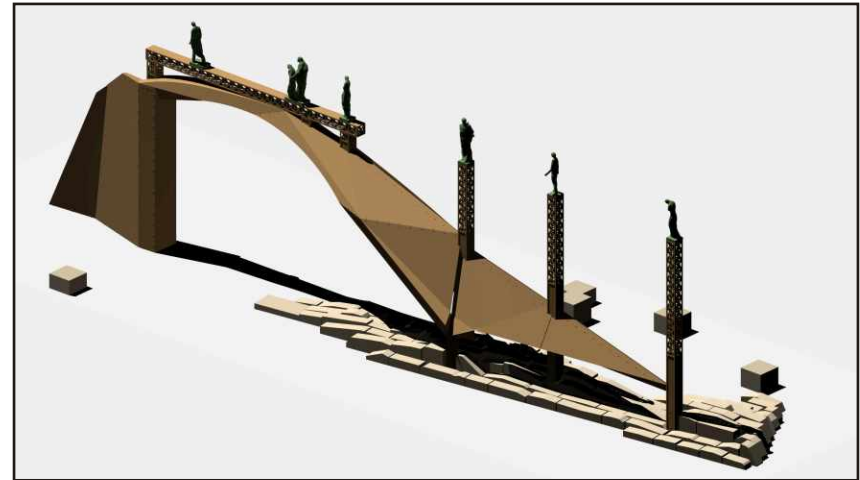
This site is unique. It marks not only the intersection of the events of the past with the present and future of the community, it is also a physical nexus. This one site offers sweeping views of the community's identifying landmarks. **Ascending Path** is a visual manifestation of this geographic, historical, and cultural significance. This sculpture brings together the diverse visual and cultural aspects of the community and expresses their commonality. ***Ascending Path presents to the viewer a singular image of the perseverance and hope felt by all peoples as they cross into the unknown of their future.***

Ascending Path

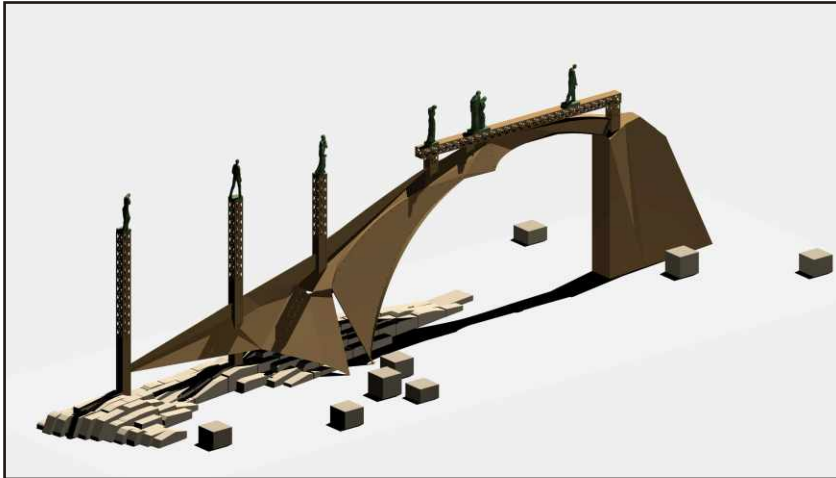
Proposed Design for Renaissance Park, Chattanooga, TN



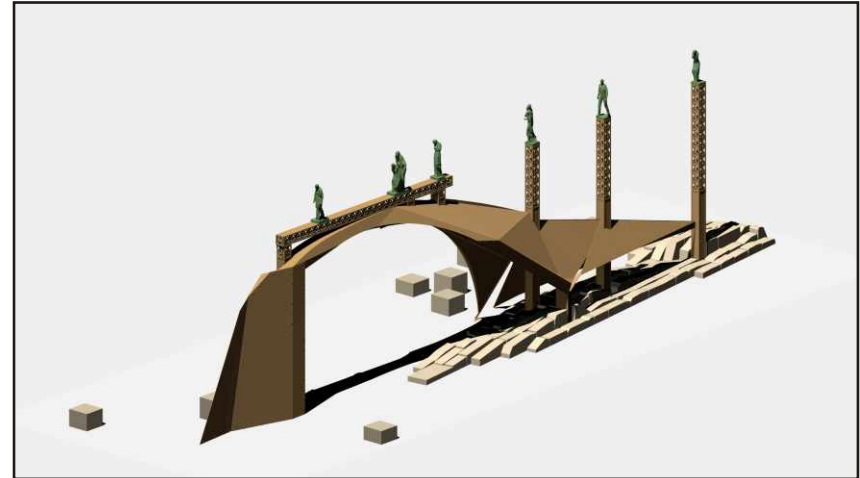
Perspective view of model looking southeast



Perspective view of model looking northwest



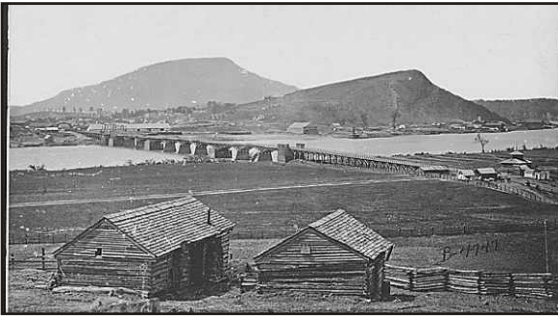
Perspective view of model looking southwest



Perspective view of model looking northeast

Ascending Path

Proposed Design for Renaissance Park, Chattanooga, TN



Civil War photo of Chattanooga and Lookout Mountain



Civil War photo of wooden bridge built over the Tennessee River by Federal troops



Civil War era steamer Civil War bridge *Passage* and Aquarium

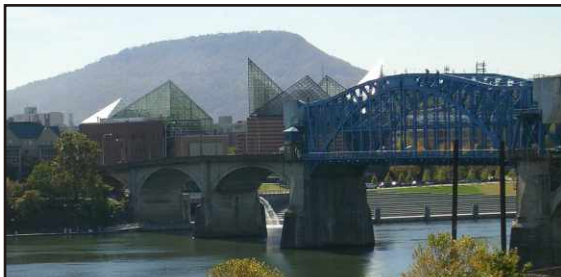


Photo of river front from Coolidge Park

VISUAL REFERENCES: Three main historical and geographic elements inspired the basic visual components of the design: the Trail of Tears, the wooden bridge over the Tennessee River and the African American garrison associated with it, and Lookout Mountain. ***"Chattanooga" is the Creek Indian name for Lookout Mountain, and means "where the rocks rise to a point."***



Panorama study of model and general landscape looking south